

## Drying of a water-filled channel within an artificial leaf

Benjamin Dollet<sup>a\*</sup>, Jean-François Louf<sup>a,b</sup>, Mathieu Alonzo<sup>a</sup>, Florie Mesple<sup>a</sup>, Kaare H. Jensen<sup>b</sup> et Philippe Marmottant<sup>a</sup>

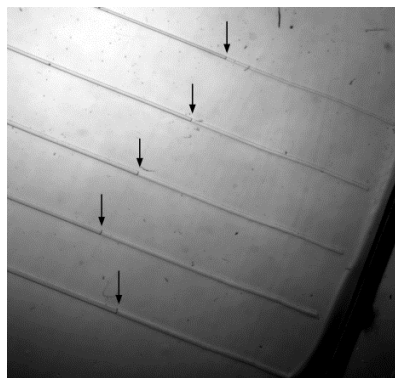
- a. Laboratoire Interdisciplinaire de Physique, UMR 5588 CNRS and Université Grenoble Alpes, 140 rue de la Physique, 38402 Saint-Martin-d'Hères, France
- b. Department of Physics, Technical University of Denmark, Fysikvej, Building 309, 2800 Kgs. Lyngby, Denmark

\* benjamin.dollet@univ-grenoble-alpes.fr

The transport of sap in the vascular network of leaves is driven by evaporation at the surface of leaves, and it has been shown [1] that a relevant analogous physical system is a network of liquid-filled channels in a permeable polymer. As such, microfluidic systems made of PDMS are particularly suited. In our study, to understand how a leaf is susceptible to dry out if its supply of sap is stopped, we investigate the drying of water-filled channels, looking at air invasion in such channels.

We create a series of isolated channels of different widths and heights in thin layers of PDMS of different thicknesses, using standard microfluidic techniques. All channels are open at one end and closed at the other hand. They are initially filled with water, then placed under a dry atmosphere. They progressively dry as a meniscus separating the still liquid-filled part and the newly dried part advances in the channel (Fig. 1). We record the motion of the meniscus with a camera, thereby measuring the rate of evaporation as a function of time. This rate decreases as the channel progressively dries, but does not vanish at the moment where liquid water disappears in the channel. We rationalize our measurements by a model combining two contributions: (i) direct diffusion of water to the atmosphere through the PDMS layer; (ii) diffusion between newly dried parts containing humid air and the dry atmosphere. In particular, we derive an asymptotic analytical prediction for the evaporation rate due to this latter process, using the fact that diffusivity of water is much lower in PDMS than in air. The data and the model are found to be in good agreement, thereby providing a physical description for the drying-up of leaves. Preliminary results in more complex networks will also be presented.

[1] X. Noblin, L. Mahadevan, I. A. Coomaraswamy, D. A. Weitz, N. M. Holbrook, M. A. Zwieniecki, Optimal vein density in artificial and real leaves, *Proc. Natl. Acad. Sci.* **105**, 9140-9144 (2008).



**Figure 1** : Drying channels (from top to bottom, width 75, 100, 125, 150 and 175  $\mu\text{m}$ ) Arrows depict the menisci.